

Installation instructions for KCUBEDISP kit used on Ice-O-Matic 22" and 30" ICE and CIM series ice machines when installed on ice dispensers.

Kit Items and Purpose:

- Bin Thermostat, Thermostat tube and brackets to maintain the Cube ice level lower than the rim of the bin.

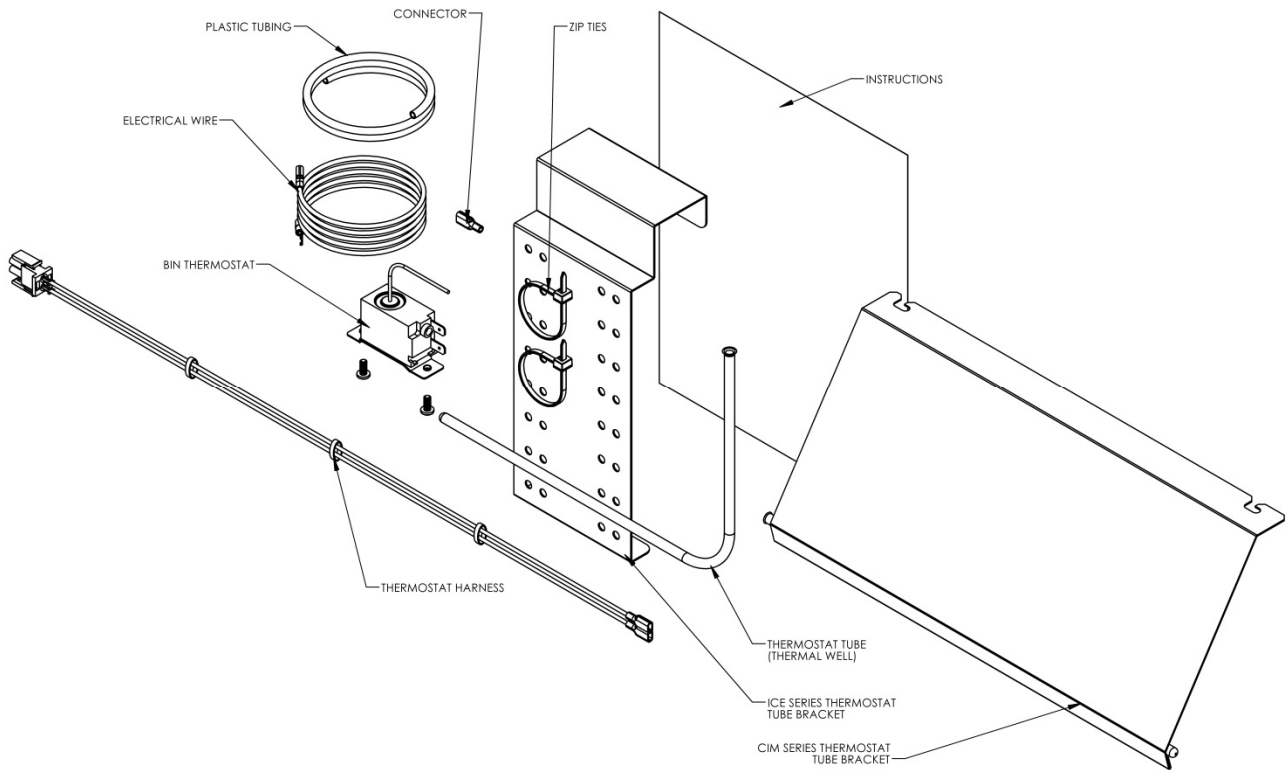


Figure 1: Components Included in Kit

Installation Stages

1. Install the IOM thermostat tube bracket.
2. Install the ice machine onto the dispenser. Note: adapter may be required, refer to dispenser manufacturer's instructions.
3. Install the IOM bin thermostat onto the Ice-O-Matic ice machine and route the capillary tube.
4. Adjust Bin Thermostat. (See Pg.4)

ICE Series Thermostat Tube Bracket:

1. Mount Bin Thermostat Tube to the Thermostat tube bracket using the fasteners provided. Install the Zip Tie Fasteners to secure the tube in the position shown below. Note: the thermostat should shut the machine off when the ice level, at the center of the dispenser, is approximately 2" from the bottom of the ice machine. The position of the tube may need to be raised or lowered depending on the dispenser.
2. Install Thermostat Tube Bracket on left side dispenser wall for ICE series machines, as shown.

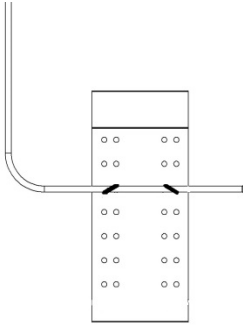


Figure 2: Thermostat Tube Mount

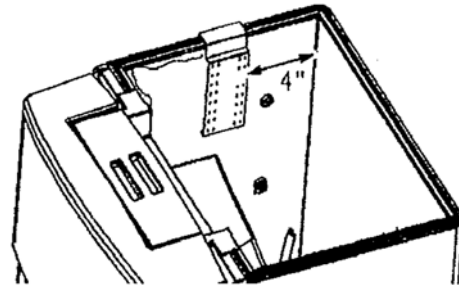


Figure 3: Thermostat Tube Bracket location

Install the ice machine onto the Dispenser

- Follow Dispenser manufacturer's instructions for installation of adapters, deflectors or other required parts.
1. After uncrating and inspection, the ice machine is ready for installation. It is important that the machine be installed in a location where it has enough space for proper air circulation and accessibility for service, see ice machine installation manual.
 2. Remove the front, top and both side panels for ease of installation. The icemaker is heavy so the use of a mechanical lift is recommended for lifting the icemaker high enough to install on top of the dispenser.
 3. Secure machine to dispenser per manufacturer instructions.

ICE Series Bin Thermostat Installation

1. Remove the control box cover and install Bin Thermostat in control box using existing mounting holes.
2. Route the bin thermostat capillary tube thru grommet in bottom of control box and position so it does not interfere with any electrical or moving components.
3. Thread capillary tube thru plastic tubing until the end of plastic tubing is approximately 24" from end of capillary tube.
4. Thread capillary tube into thermal well on Thermostat Tube Bracket. Make sure capillary tube extends thru entire length of thermal well. Position plastic tubing so that bottom end of plastic tubing is against top end of thermal well.
5. Silicone top end of thermal well.

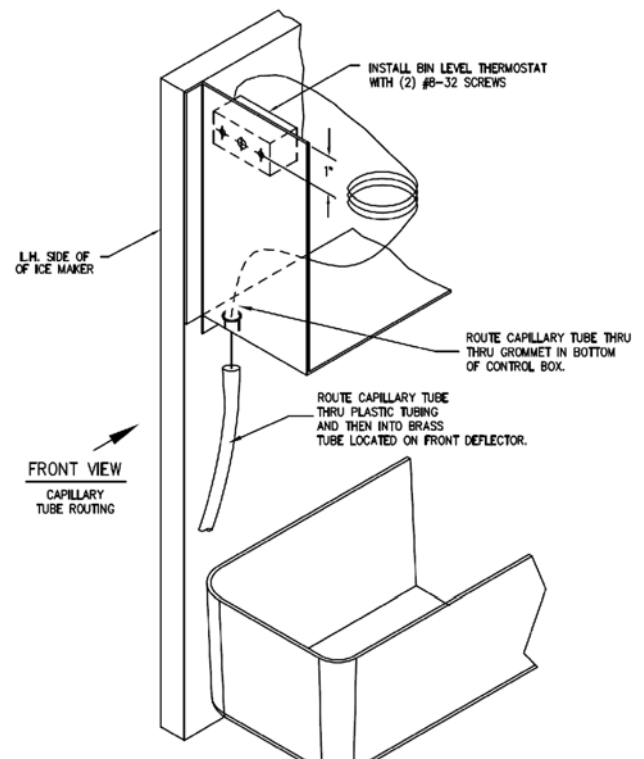


Figure 4: Thermostat in control box

ICE Series Bin Thermostat Wiring

1. Disconnect red wire from bin fill switch and cut off terminal end. This wire will be connected to bin thermostat
2. Pull wire back through wire ties and into control box.
3. Cut wire to appropriate Length and crimp supplied 1/4" Q.C. to end of wire and connect to Bin Thermostat.
4. Use the red wire from the kit and connect the 1/4" Q.C. to the Bin Thermostat and connect the other end to the Bill Fill Switch.

5. Secure new red wire with supplied wire ties.
6. Adjust the bin thermostat (see **Bin Thermostat Adjustment** section).

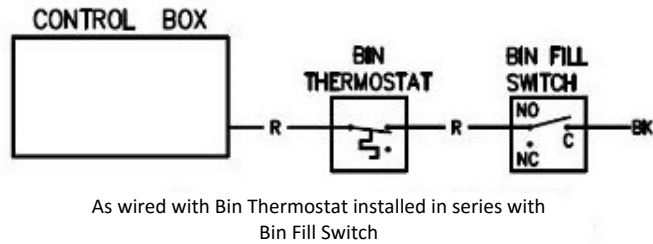
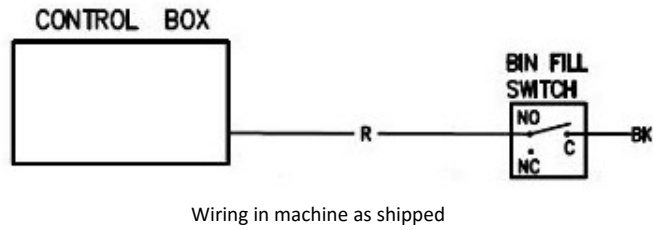


Figure 5: Bin Thermostat wiring

CIM Series Thermostat Tube Bracket:

1. Install the ice deflector assembly to the ice machine. Make sure that the end of the deflector with the thermal well is down into the bin. Secure with the #10 screws provided in the base.
2. Remove the plug from the right side of the food zone for the installation of the bin thermostat in later steps. **Note:** The slots in the ice deflector are designed so that the screws in the base only need to be loosened, rather than completely removed.

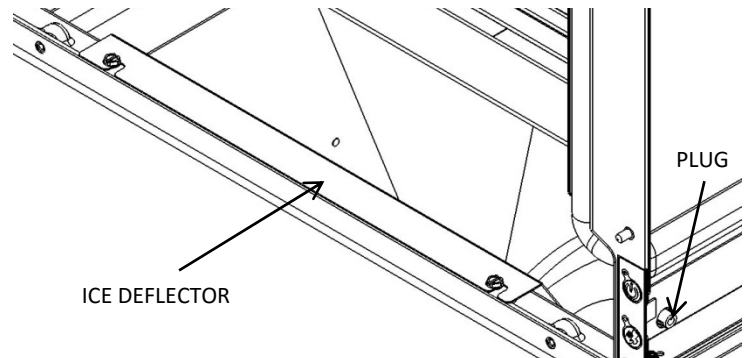


Figure 2: CIM Deflector Installation

CIM Series Bin Thermostat Installation

1. Remove control box cover & install the bin level thermostat in holes provided on the control box or frame.
2. Attach provided bin thermostat harness to the thermostat, and then route other end into the control box. Plug into the control board connector labeled bin thermostat.
3. Route thermostat capillary tube so it does not interfere with any electrical or moving components. There is a removable plastic cap in the right wall of the food-zone to run the cap tube

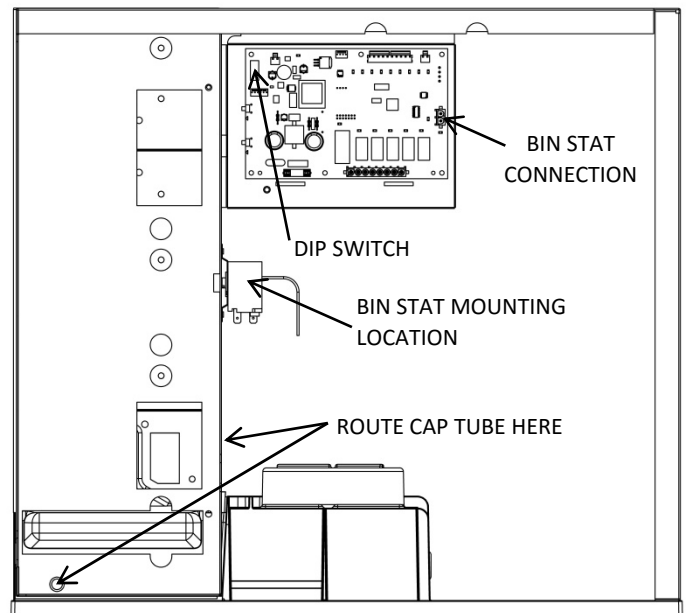


Figure 6: CIM Right Side View

thru. Thread capillary tube thru plastic tubing until the end of plastic tubing is approximately 24" from end of capillary tube.

4. Thread capillary tube into thermal well on Thermostat Tube Bracket. Make sure capillary tube extends thru entire length of thermal well. Position plastic tubing so that bottom end of plastic tubing is against top end of thermal well.
5. Silicone top end of thermal well.
6. Flip second dip switch on Control Board (top left corner) to on position (see image).
7. Adjust the Bin Thermostat (see **Bin Thermostat Adjustment** section).

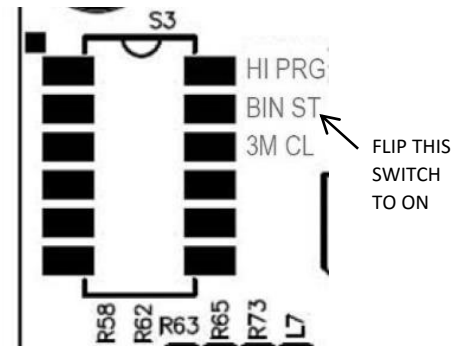


Figure 7: Dip Switch

Bin Thermostat Adjustment:

1. Hold ice against the thermal well of the bin bracket, making sure the ice is in contact with the entire length of the thermal well. The bin control should open in approximately 1 minute. Remove the ice. The bin control should close in approximately 3 minutes. If a major adjustment is required, turn the adjustment screw counterclockwise (colder) until it stops then turn the adjustment screw clockwise (warmer) 1/8 of a turn. This should put the control close to the proper adjustment, recheck and make a minor adjustment if needed. If a minor adjustment is required, turn the adjustment screw clockwise (warmer) or counterclockwise (colder).
2. Return the control box cover to the ice machine.
3. Reference the Installation Manual (Supplied with the ice machine) for start-up instructions. Install all panels when complete.

Checklist for installed items:

- Thermostat Tube bracket and thermal well properly mounted
- Bin Thermostat capillary tube into the bin bracket thermal well and sealed with silicone
- Bin Thermostat wired
- Bin Thermostat adjusted